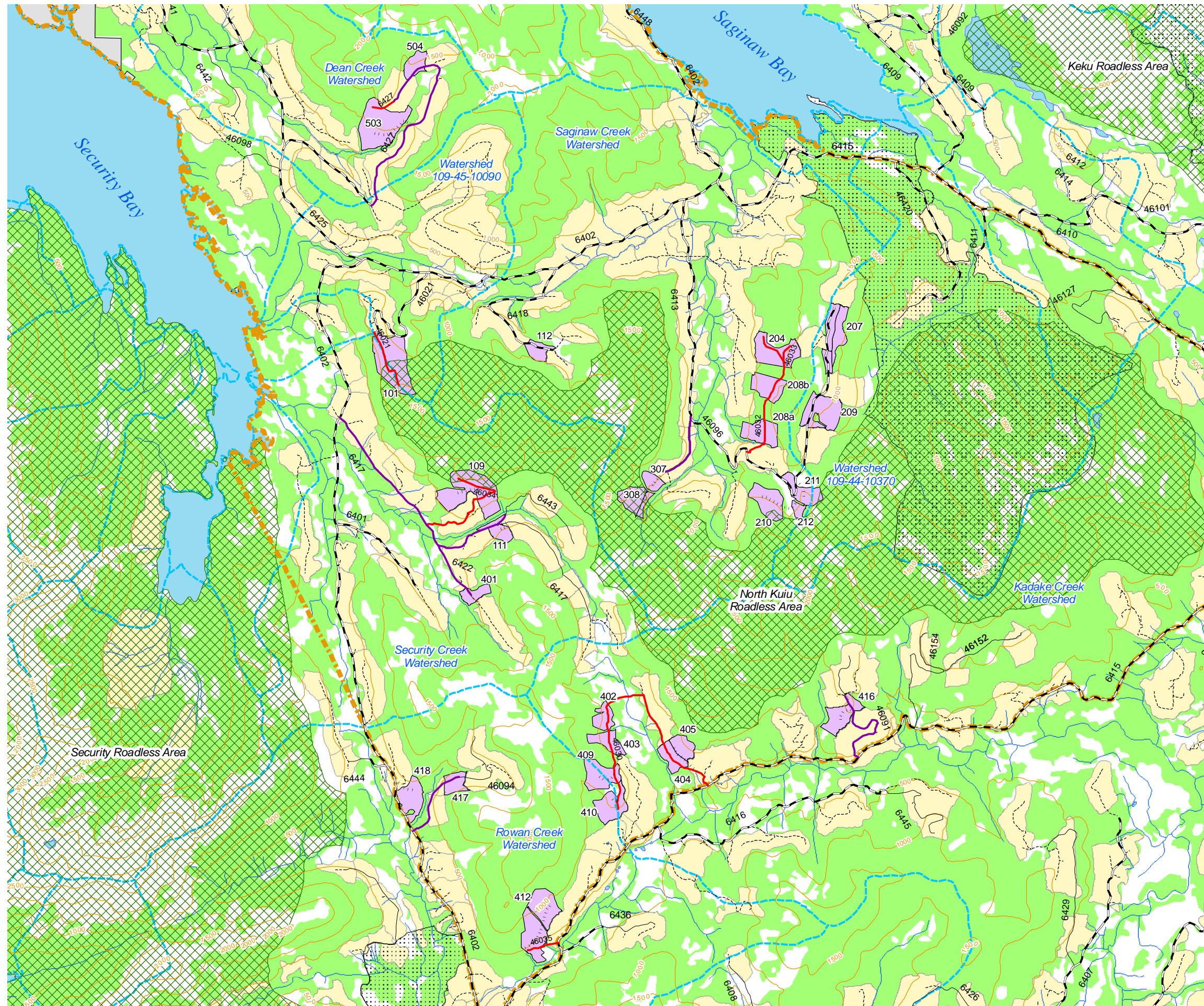
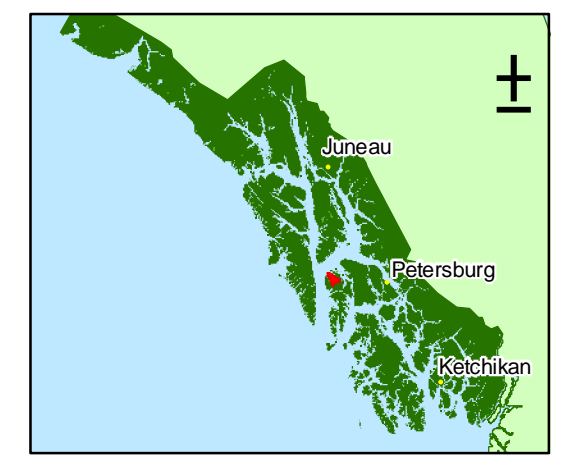


Kuiu Timber Sale ROD - 1 Record of Decision



- Legend**
- Clearcut (0% Retention)
 - Productive Old-Growth
 - Managed Stands
 - Non-National Forest
 - Lakes/Saltwater
 - Roadless Areas
 - OGR
 - Selected Temporary Roads
 - Reconstructed Roads
 - Selected System Roads
 - Existing Open Roads
 - Roads in Storage (Closed)
 - Decommissioned Roads
 - Project Area Boundary
 - 500ft Contour Interval
 - Stream Class I & II
 - Watershed Boundary



SOUTHEAST ALASKA VICINITY MAP
PROJECT AREA SHOWN IN RED

0 0.25 0.5 1 1.5 2 Miles

c:\work\sp\kuiu_rod\rod1\map\rod1.mxd 01-23-08 EP